



# Caprosyn™ Monofilament Synthetic Absorbable Suture

### WHY USE Caprosyn™?

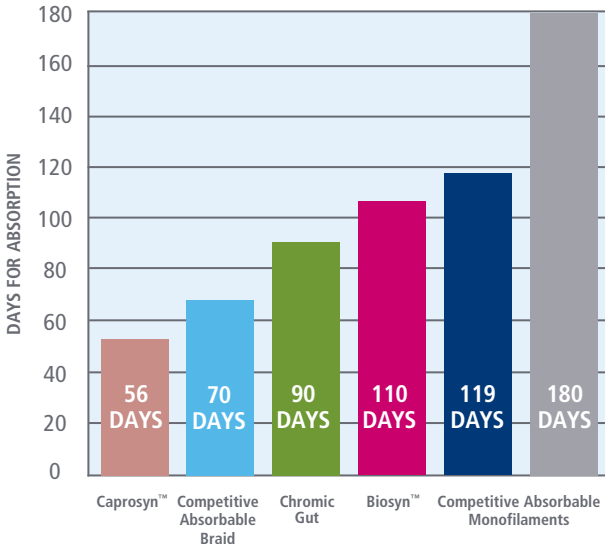
#### THE IMPORTANCE OF SPEED FOR RECOVERY—QUICK ABSORPTION CAN LESSEN WOUND COMPLICATIONS

Patients can experience less discomfort during healing. Caprosyn™ suture’s quick absorption, durable polymer material and monofilament construction means smooth passage through tissue, better approximation or ligation, and minimized potentiation of infection. In other words, working toward a faster recovery for your patients.

Specifically, Caprosyn™ sutures deliver a much faster absorption rate than other USP synthetic absorbable sutures—essentially complete in 56 days.

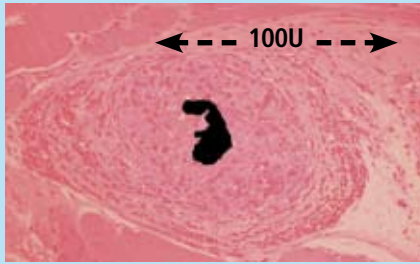
- Can experience less discomfort
- Smooth Passage
- Better approximation or ligation
- Minimized potentiation of infection
- Faster recovery

**Suture Mass Absorption (in-vivo)**

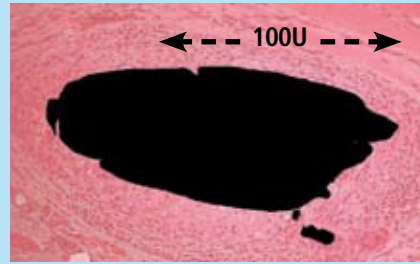


## Caprosyn™ vs. Monocryl™

56 days post implantation (under magnification)



Caprosyn™ 3% Suture Remaining



Monocryl™ 91% Suture Remaining

### Advantages of Caprosyn™ Over Gut Suture

- **Lower Tissue Reactivity** – Synthetic suture is inherently less reactive and may reduce the chances of scarring and adhesions.
- **Suture Integrity** – Caprosyn™ maintains integrity after multiple passes whereas Gut suture may fray after multiple passes.
- **Predictable Strength and Absorption Profiles** – Gut may display inconsistent strength and absorption profiles based on the variable factors involved in enzymatic absorption and in the gut material itself.
- **Less Tissue Drag** – Monofilament surface of Caprosyn™ results in less tissue drag than the twisted surface of Gut suture.
- **Superior Handling** – Caprosyn™ is extremely easy to handle and tie compared to Gut suture.
- **Superior Strength Out-of-Package** – Caprosyn™ is stronger out-of-package and provides secure wound approximation for ten days.
- **Reduced Potentiation of Infection** – The enzymatic degradation of Gut suture is reactive to the host tissue and typically results in greater bacterial presence than Caprosyn™, which is degraded by hydrolysis.

### Frequent Uses

Plastic Surgery, General Subcuticular Closure, OB/GYN, Urological and ENT.

### Indications

Indicated for use in general soft tissue approximation and/or ligation, but not for use in cardiovascular or neurological surgery, microsurgery, or ophthalmic surgery.

### Contraindications

Being absorbable, Caprosyn™ suture should not be used where extended approximation of tissue is required. Users should be familiar with surgical procedures and techniques involving absorbable sutures.

### Specifications

Composition	Glycolide, Caprolactone, Trimethylene Carbonate and Lactide
Sizes	6/0 – 1
Color	Undyed & Violet
Units Per Box	1 dozen, 2 dozen, 3 dozen
Lengths	18, 30, 36, 60-inch lengths, as well as Pre-Cut and Reels
Absorption Profile	Essentially Complete in 56 days
Tensile Strength	60% USP Knot Pull at 5 days 20–30% USP Knot Pull at 10 days
Needle Availability	Extensive variety of types, shapes, and lengths

Learn more: [www.covidien.com/syneture](http://www.covidien.com/syneture)  
or place your order at: 1 800 722 8772.



COVIDIEN, COVIDIEN with logo and "positive results for life" are trademarks of Covidien AG.  
© 2008 Covidien AG or its affiliates. All rights reserved.  
379248 SS 3M 3.08 CBR000141